

Candida infection of a Boston Type I Keratoprosthesis (KPro)

Category(ies): Cornea, External Disease

Contributor: [Jesse Vislisel, MD](#)

Photographers: Brice Critser, CRA (fig 1); Stefani Karakas, CRA(fig. 2)

The Boston Type I Keratoprosthesis is a prosthetic corneal replacement used to restore vision in individuals with severe corneal disease and contraindications to traditional keratoplasty techniques. Like other artificial implants in the body, the KPro may be a nidus for infection. Fungal infections may occur around the device stem and appear milky-white, as seen in these photographs. Also shown is a photograph prior to the infection for comparison (figure 1).

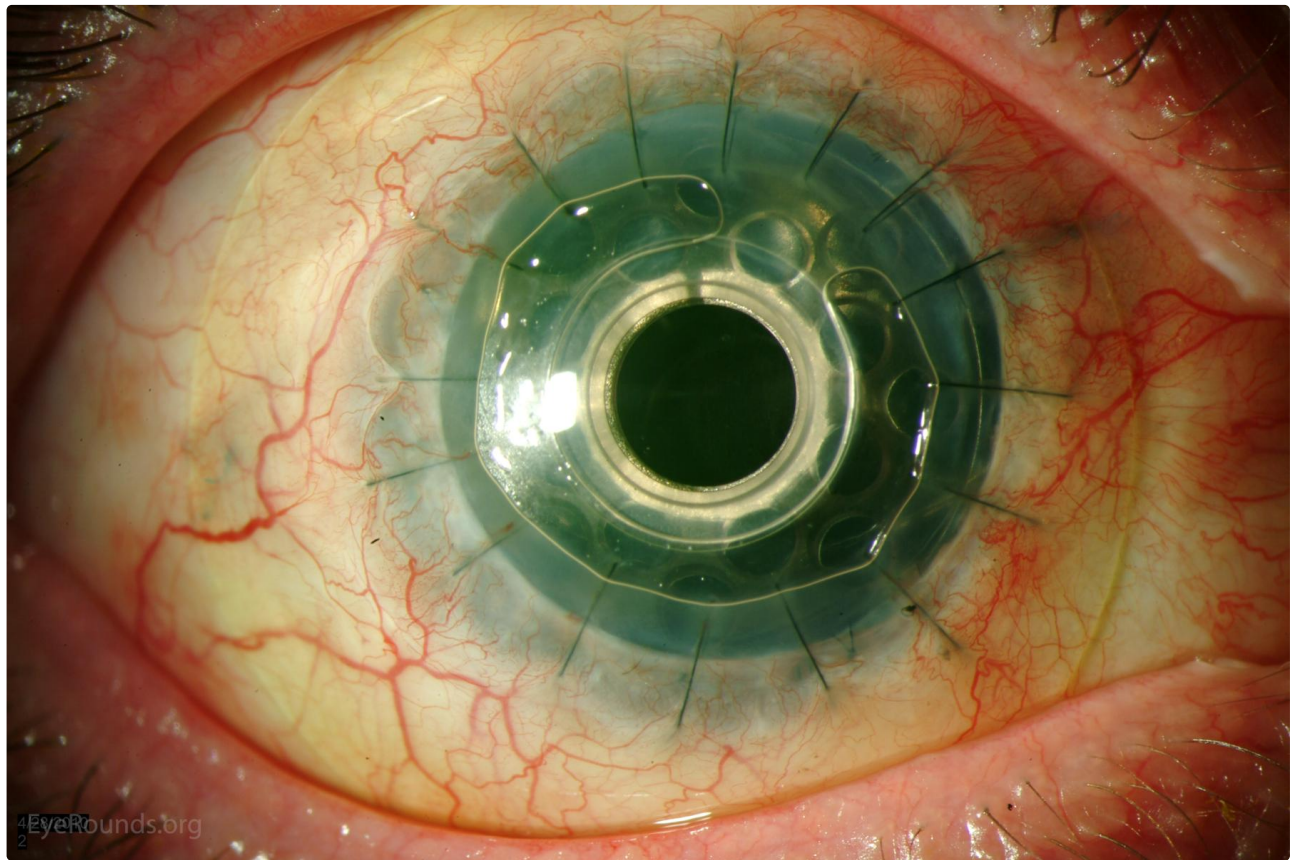


Figure 1: Boston Type I Keratoprosthesis

 Enlarge

 Download

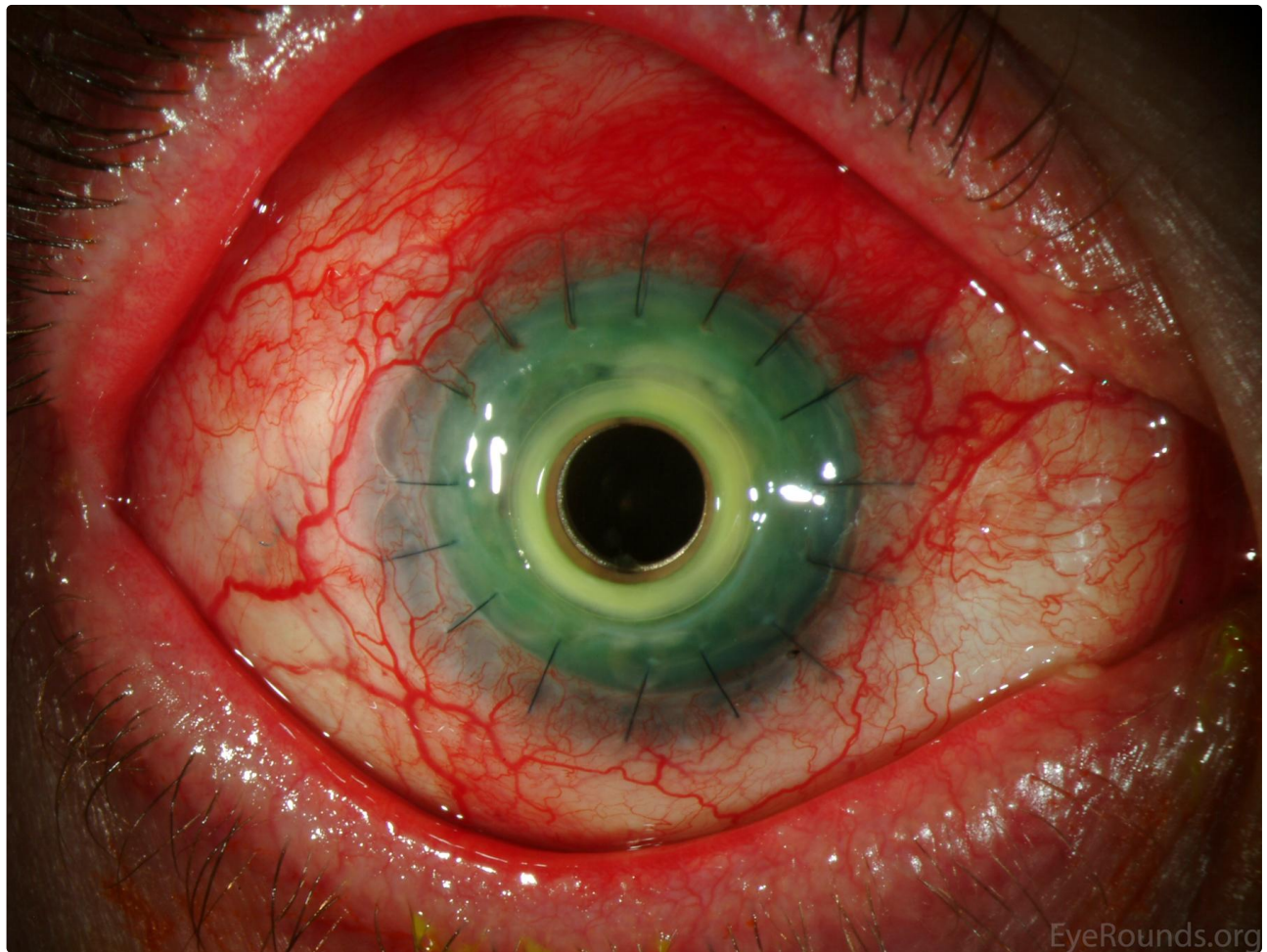
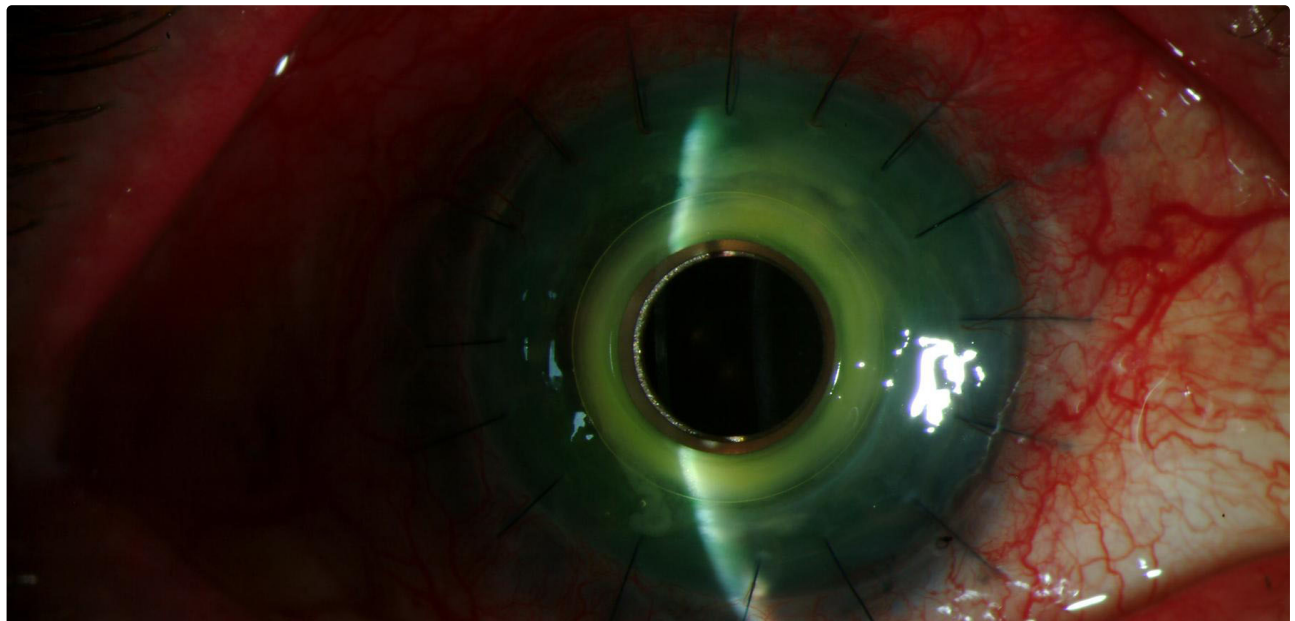


Figure 2a: KPro with infected implant

[Enlarge](#)

[Download](#)



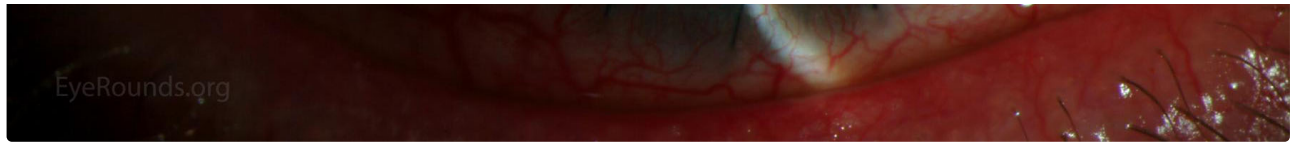


Fig 2b: Slitlamp view of Fig 2a

[Enlarge](#)

[Download](#)

Image Permissions:



Ophthalmic Atlas Images by [EyeRounds.org](#), [The University of Iowa](#) are licensed under a [Creative Commons Attribution-NonCommercial-NoDerivs 3.0 Unported License](#).



Related Articles



[Related Case: Boston Keratoprosthesis](#)

Address

University of Iowa
Roy J. and Lucille A. Carver College
of Medicine
Department of Ophthalmology and
Visual Sciences
200 Hawkins Drive
Iowa City, IA 52242

[Support Us](#)

Legal

Copyright © 2019 The University of
Iowa. All Rights Reserved
[Report an issue with this page](#)
[Web Privacy Policy](#) |
[Nondiscrimination Statement](#)

Related Links

[Cataract Surgery for Greenhorns](#)
[EyeTransillumination](#)
[Gonioscopy.org](#)
[Iowa Glaucoma Curriculum](#)
[Iowa Wet Lab](#)
[Patient Information](#)
[Stone Rounds](#)
[The Best Hits Bookshelf](#)

EyeRounds Social Media

Follow



Receive notification of new cases,
[sign up here](#)
[Contact Us](#)
[Submit a Suggestion](#)